



# COMMERCIAL STOREFRONT

[www.Durabold.net](http://www.Durabold.net)



DURABOLD is a brand that offers Storefront & Windows.

We offer products that provide benefits for Commercial Storefront & Residential:

- Modern design that suitable for any style design.
- Suitable for interior and exterior.
- Reduce noise & heat from outside (more efficient).
- Easy to install (low cost).
- Easy to clean.
- Export Quality - Made in Indonesia.
- Meets USA standards.



Division of Young Corporation  
Reputable Properties Development & Industries  
in USA & Indonesia with 38 Years of Experience

# TABLE OF --- CONTENTS

<b>Type 4000 / 4200 Storefront Framing</b>	<b>03</b>
Basic Framing	04
Entrance Framing	04
Hardware	05
<b>Type 6000 Curtain Wall</b>	<b>06</b>
Basic Framing	07
Entrance Framing	07
Hardware	08
<b>Frameless</b>	<b>09</b>



# TYPE 4000 / 4200 STOREFRONT FRAMING

[www.Durabold.net](http://www.Durabold.net)



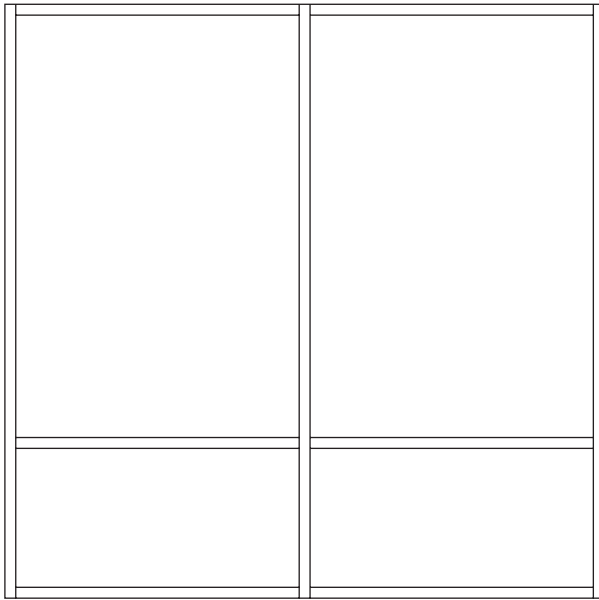
# TYPE 4000 / 4200 STOREFRONT FRAMING

An ideal choice for leasing offices, ground floor retail, or shared amenity areas. This system combines clean, modern lines with flexible frame options to suit both interior and exterior applications. Engineered for efficiency, it's quick to install and easy to maintain.

[www.Durabold.net](http://www.Durabold.net)

## Features :

- 2" (50.8mm) sightline
- 4-1/2" (114.3mm) depth
- Center or Front glass applications



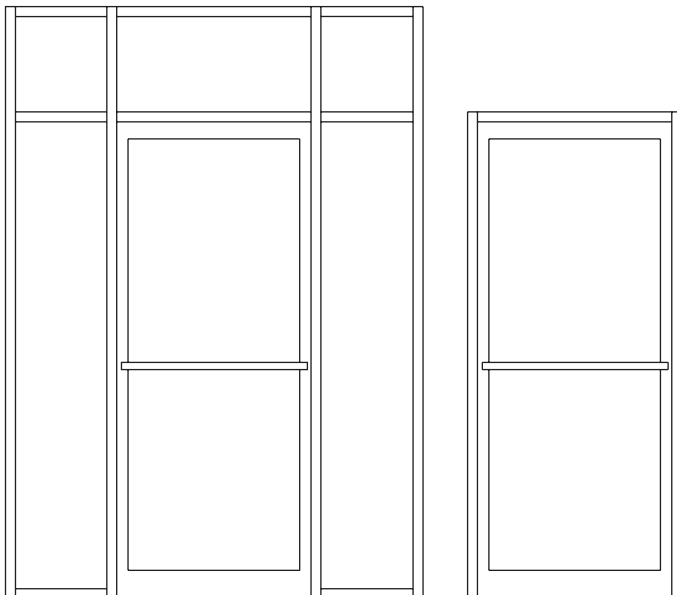
## BASIC FRAMING

Available options:

- Center glass
- Front glass

### NOTE:

- See Type 4000 / 4200 Basic Framing Details PDF for further information.



## ENTRANCE FRAMING

Available options:

- 190 Narrow
- 350 Medium
- 500 Wide

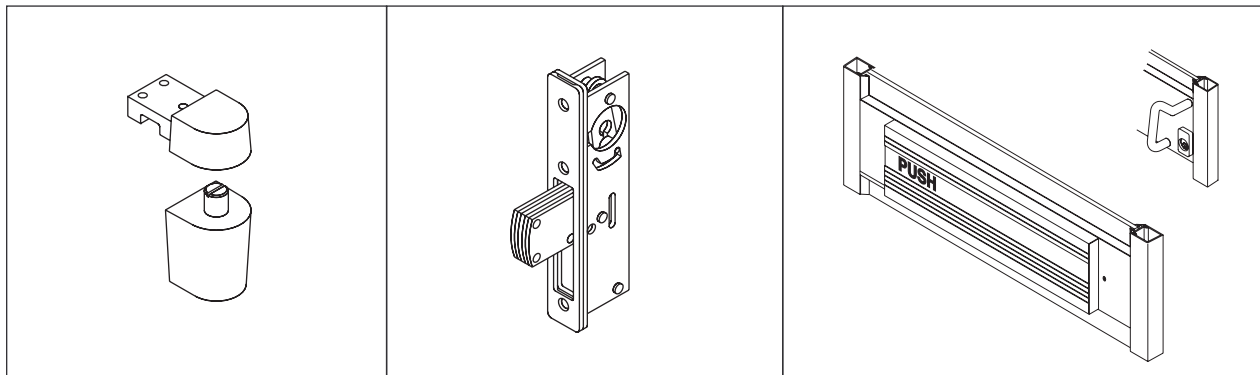
### NOTE:

- Other Types Of Durabold Doors May Be Used With This Framing System.
- See Entrance Framing Details PDF for further information.

# TYPE 4000 / 4200

## STOREFRONT FRAMING

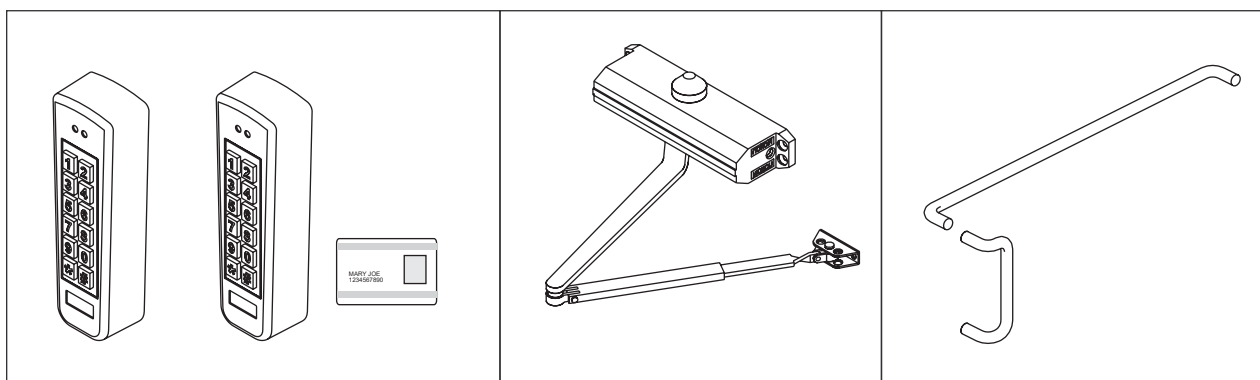
### HARDWARE



PIVOT/HINGES

LOCKS/LATCHES

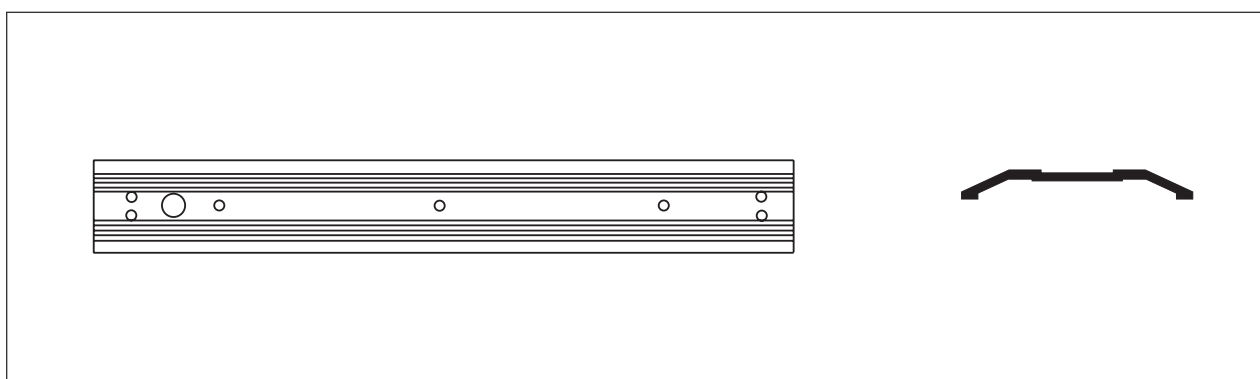
EXIT DEVICES



ACCESS CONTROL

CLOSERS

PUSH/PULLS



THRESHOLDS

#### NOTE:

- See Hardware Details PDF and another option Hardware for further information.

# TYPE 6000 CURTAIN WALL

[www.Durabold.net](http://www.Durabold.net)



The color might be slightly different due to the printing process  
Information about technical details and colors from this catalog may be modified or updated by the company without prior notice Please contact us for further information

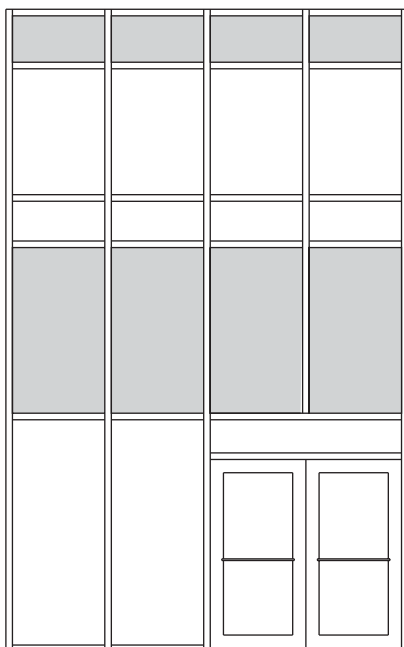
# TYPE 6000 CURTAIN WALL

Perfect for mid to high rise apartment buildings and office facades, this system provides strong structural support with slim profiles and excellent thermal performance. It offers a modern, glazed appearance for main entrances, lobbies, or vertical spans.

[www.Durabold.net](http://www.Durabold.net)

## Features :

- 2-1/2" (63.5mm) sightline
- 6" (152.4mm), 7-1/2" (190.5mm) or 10-1/2" (267mm) depth
- Low- to mid-rise applications



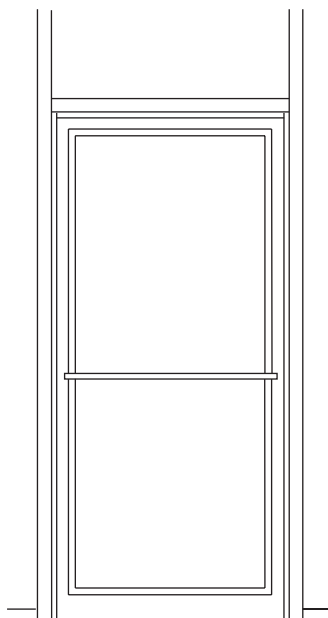
## BASIC FRAMING

Available options:

- 1" Infill
- 1/4" Infill

### NOTE:

- See Type 6000 Curtain Wall Framing Details PDF for further information.



## ENTRANCE FRAMING

Available options:

- Butt Hung Or Offset Pivot
- Center Hung

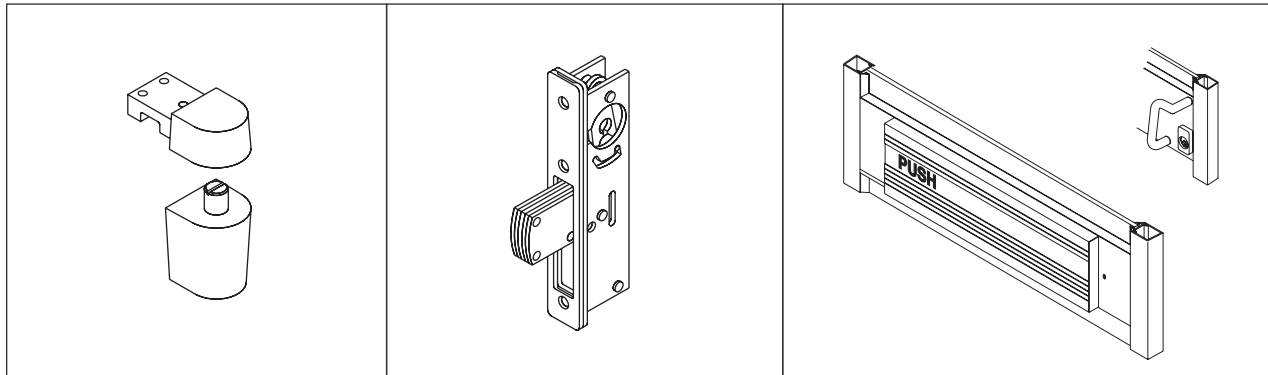
### NOTE:

- See Type 6000 Curtain Wall Framing Details PDF for further information.



# TYPE 6000 CURTAIN WALL

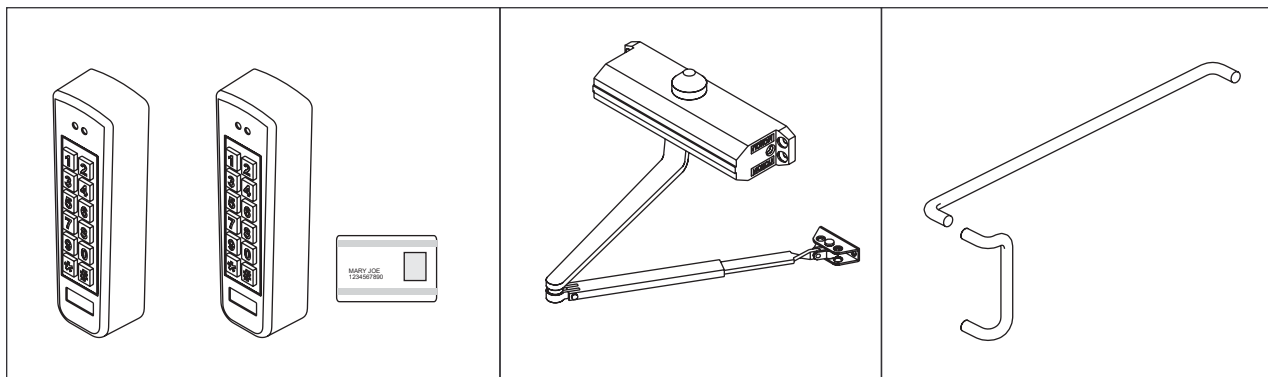
## HARDWARE



PIVOT/HINGES

LOCKS/LATCHES

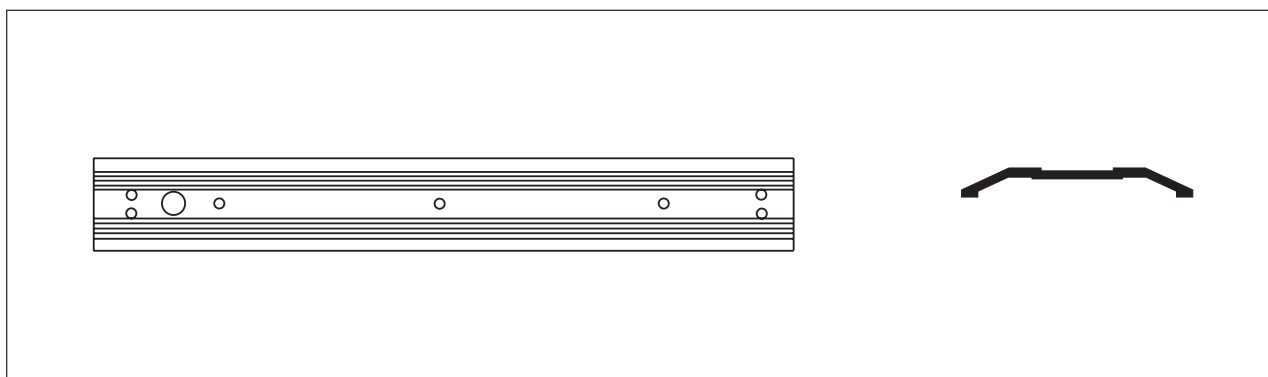
EXIT DEVICES



ACCESS CONTROL

CLOSERS

PUSH/PULLS



THRESHOLDS

### NOTE:

- See Hardware Details PDF and another option Hardware for further information.



# FRAMELESS

[www.Durabold.net](http://www.Durabold.net)

A sleek, all glass system that creates a seamless, upscale look for property entrances, coworking lobbies, or clubhouse facilities. Designed to maximize visibility and natural light, while minimizing visual interruptions





# FRAMELESS

[www.Durabold.net](http://www.Durabold.net)

The color might be slightly different due to the printing process  
Information about technical details and colors from this catalog may be modified or updated by the company without prior notice Please contact us for further information





- 📍 4261 Communications Drive  
Norcross, GA 30093, USA
- 📞 Phone : +1 (323) 722-6868
- ✉ Email: [durabold@youngcorporation.com](mailto:durabold@youngcorporation.com)
- 



- 📍 88 Konrad Crescent #2  
Markham, ON L3R 8T7, Canada
- ✉ Email: [durabold@youngcorporation.com](mailto:durabold@youngcorporation.com)
- 



- 📍 Jl. Sunset Road No.85 X,  
Seminyak, Kec. Kuta, Kab. Badung  
Bali 80361
- ✉ Email: [sales@homestyle.co.id](mailto:sales@homestyle.co.id)
- 
- 📍 Ruko Prominence 38F  
No. 41-42, Alam Sutera,  
Kec. Pinang, Kota Tangerang,  
Banten 15143, Indonesia  
Email: [sales@homestyle.co.id](mailto:sales@homestyle.co.id)
- 

