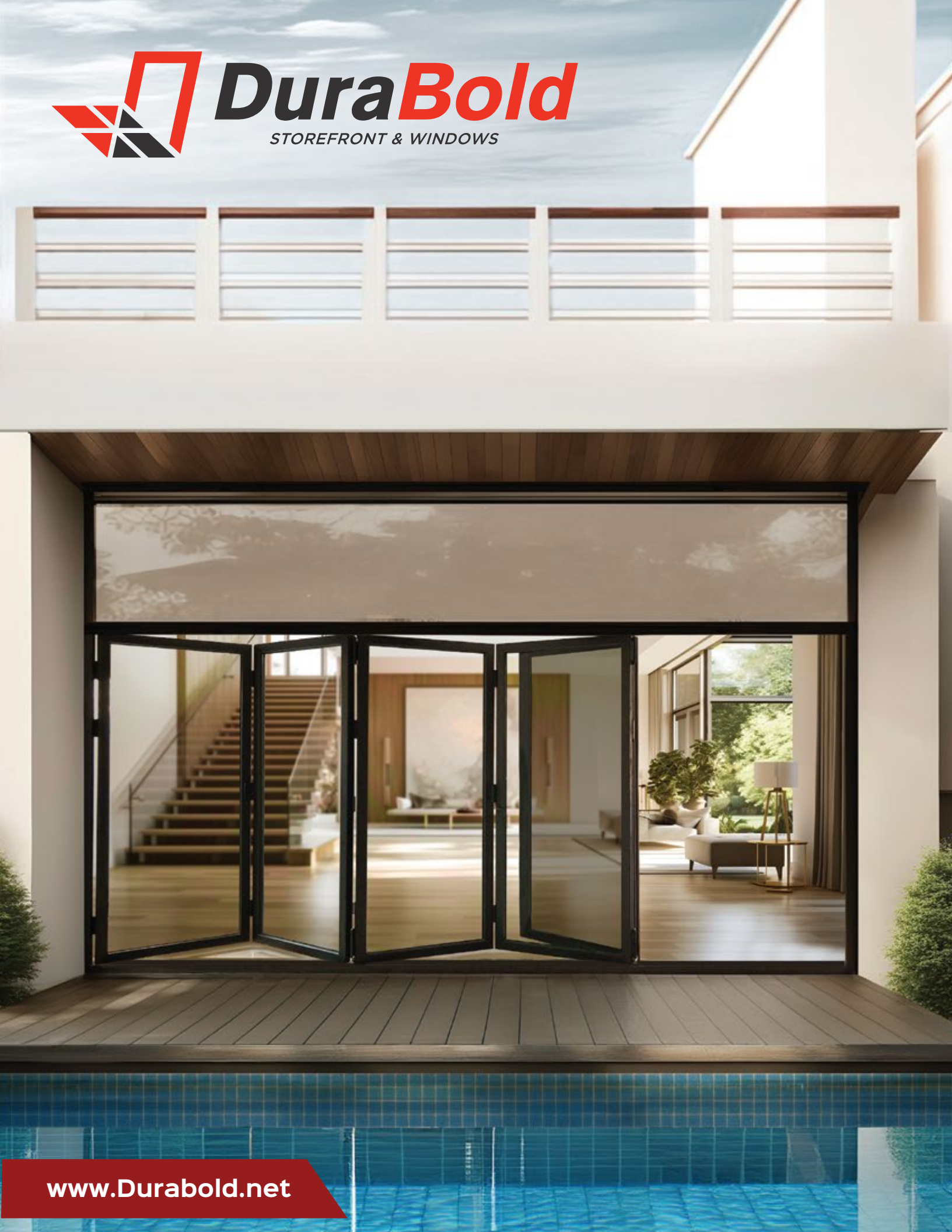




# **DuraBold**

STOREFRONT & WINDOWS



[www.Durabold.net](http://www.Durabold.net)

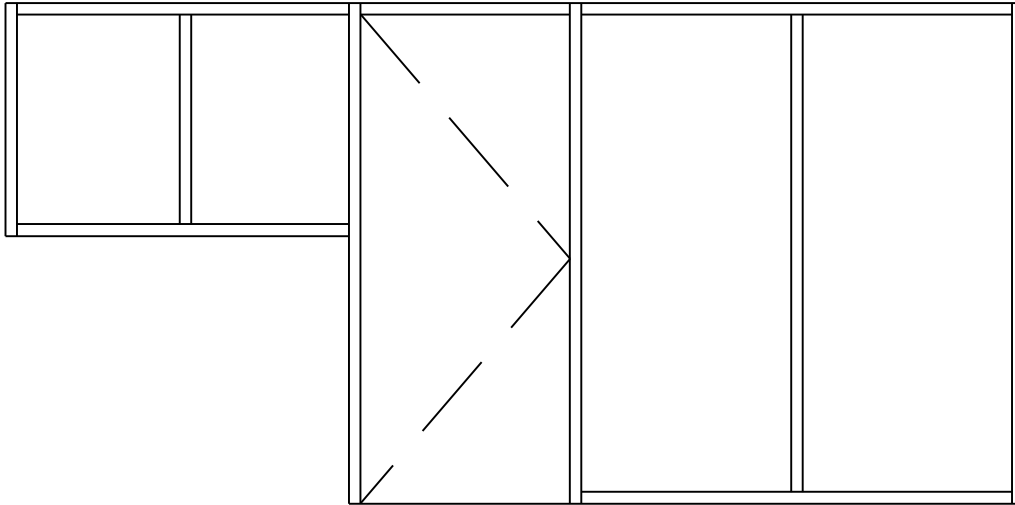
# STOREFRONT

[www.Durabold.net](http://www.Durabold.net)

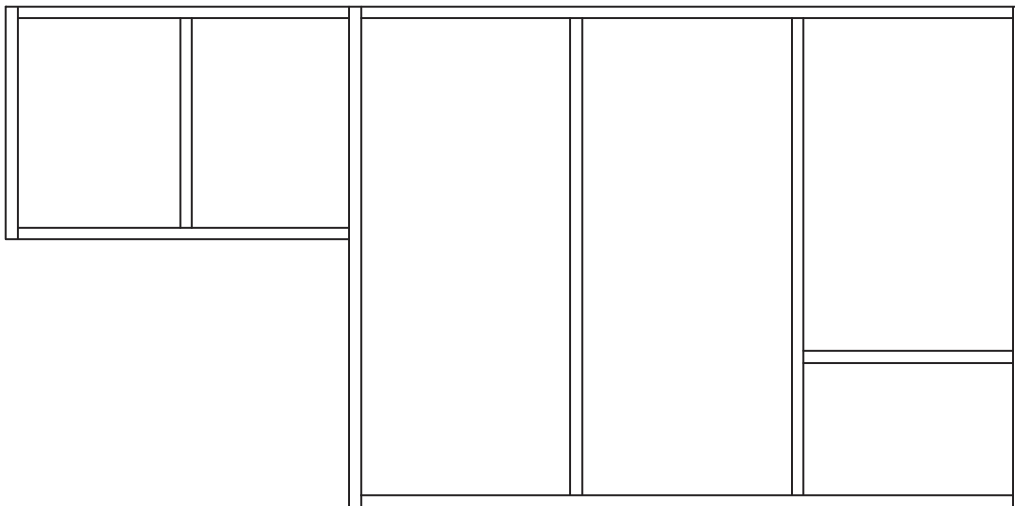


# Available Configuration

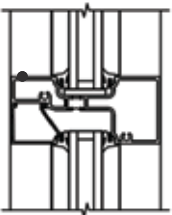
## Glass Door & Glass Windows ▼



## Glass Windows ▼



## FRAMING SYSTEM ▼



- 2" (50.8mm) sightline
- 4-1/2" (114.3mm) depth
- High-thermal performance
- Center glass applications, Structural silicone glazed (SSG) options,
- Pre-glazed options Hurricane resistant
- Anodized Finish: Silver/Black/Dark bronze

## DOOR HARDWARE ▼



Handle

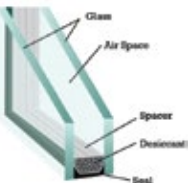


Door Closer



Pivots

## GLAZING TYPE ▼



- 1" Glazing (2 x 1/4" with a 1/2" air space)
- Tempered safety glass
- High-thermal performance Low-E coating
- Argon provided in the 1/2" air space
- 1/4" Glazing option (Interior storefronts)
- Spandrel glazing option



Locking system

Aluminum, UPVC, or PVC frames are available

[www.Durabold.net](http://www.Durabold.net)

# ALUMINIUM WINDOWS

[www.Durabold.net](http://www.Durabold.net)

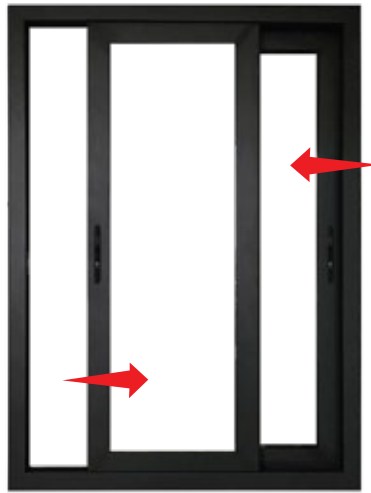


# Aluminium

## Sliding Windows



Closed



Opened

### Specifications

Profile : 143  
Glass : Double tempered glass with Low-E  
5mm+27Ar+5mm clear  
U factor 0.3

Details : Thermal break aluminum 2.0mm thickness  
Waterproof high track  
Color : Black

## Swing Windows



Closed



Opened

### Specifications

Profile : 103  
Glass : Double tempered glass with Low-E  
5mm+27Ar+5mm clear  
U factor 0.3

Details : Thermal break aluminum 2.0mm thickness  
Color : Black

# Aluminium

## Turn & Tilt Windows



Opened 1

Opened 2

### Specifications

Profile	: 85
Glass	: Double tempered glass with Low-E 5mm+27Ar+5mm clear U factor 0.3
Details	: Thermal break aluminum 2.0mm thickness
Color	: Black



# Aluminium

## Sliding Doors

---



### Specifications

Profile	: 143
Glass	: Double tempered glass:5mm+27Ar+5mm clear U factor 0.3
Details	: Thermal break aluminum 2.0mm thickness Waterproof high track
Color	: Black

# Aluminium

## Folding Doors

---



Closed Condition



Opened Condition

### Specifications

Profile	: 75
Glass	: Double tempered glass:5mm+27Ar+5mm clear U factor 0.3
Details	: Thermal break aluminum 2.0mm thickness
Color	: Black



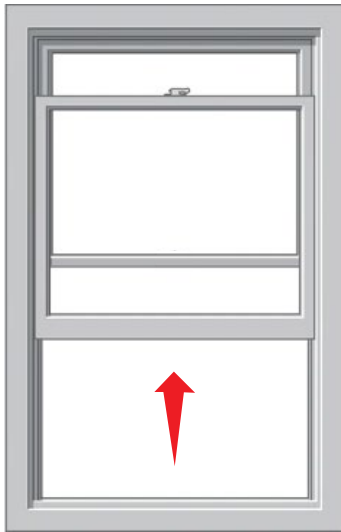
# UPVC WINDOWS

[www.Durabold.net](http://www.Durabold.net)



## Single Hung Windows

---



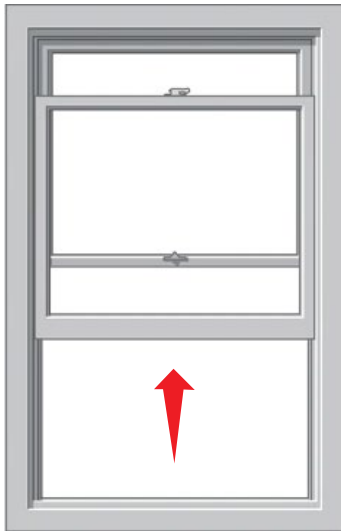
Opened

### Specifications

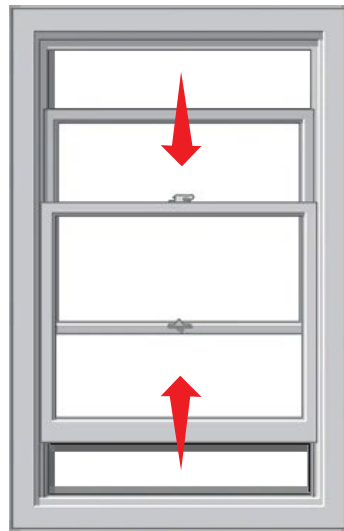
Profile	: 82
Glass	: Double tempered glass with Low-E 5mm+9Ar+5mm clear
Details	: Nail Fin, Crescent Lock
Color	: White
Optional	: Flynet Fiberglass net

## Double Hung Windows

---



Opened 1



Opened 2

### Specifications

Profile	: 82
Glass	: Double tempered glass with Low-E 5mm+9Ar+5mm clear
Details	: Nail Fin, Crescent Lock
Color	: White
Optional	: Flynet Fiberglass net

# Our Projects



## Cheney Mill Redevelopment

*250 South Depot Street,  
Pendleton Sc 29670, South Carolina*

374 UPVC Single Hung Windows

208 Aluminium Windows



## Young Creek Townhome

*Suwanee*

222 Aluminium Turn & Tilt Windows

17 Folding Doors



## Aster Apartments

*Canggu, Bali Indonesia*

92 Folding Doors

# Gallery Our Productions





# DuraBold

STOREFRONT & WINDOWS



If you have any questions about our products or how to place an order please contact us



4261 Communications Drive  
Norcross, GA 30093, USA  
Email: [durabold@youngcorporation.com](mailto:durabold@youngcorporation.com)  
Phone : +1 (323) 722-6868



88 Konrad Crescent #2  
Markham, ON L3R 8T7, Canada  
Email: [durabold@youngcorporation.com](mailto:durabold@youngcorporation.com)



Jl. Sunset Road No.85 X,  
Seminyak, Kec. Kuta, Kab. Badung  
Bali 80361  
Email: [sales@homestyle.co.id](mailto:sales@homestyle.co.id)



Division of YOUNG CORPORATION

[www.Durabold.net](http://www.Durabold.net)